

A Higher Level of Performance



Data Sheet

Sultan

Sonar System

Sludge and Submerged Interface Level Measurement



For more information, please visit >
www.hawkmeasure.com

www.contromat.com

info@contromat.com | +972-3-9744044



Overview

Sultan Sonar System



Principle of Operation

The HAWK Sultan Sonar uses Advanced Sonar Technology to measure and control Waste Water Clarifiers and Thickeners. The system is easy to use and the innovative design provides critical plant control to optimize performance.

In the water, wastewater industry process conditions will vary greatly between a primary sedimentation tank, secondary / final clarifier and a gravity thickener. Thickener bed levels, secondary RAS blanket, flocculent blanket etc, all have different densities and the water above these interface levels are subject to different process conditions that change.

To optimize performance in each interface application under all process environments:

HAWK has developed a powerful low frequency transducer to penetrate through the suspended solids and capable of measuring the sludge bed level at the bottom of a clarifier or the lightest flocculent layer.

To optimize performance under all process environments in each interface application:

HAWK uses one transducer with a frequency and power level that is applicable to the density of the interface and process conditions expected in the tank. HAWK can guarantee performance for controlling pumps etc, rather than for monitoring purposes only.

Value Added Benefits

- Improved efficiency and control of the treatment process
- Fully automated plant systems with reliable sludge blanket level monitoring
- Advanced warning of biological upset or hydraulic imbalance
- Reduced maintenance with 5 year cleaning mechanism warranty (no blades to replace)
- Reduced site operational costs significantly with improved process control for downstream operations
- Improved health and safety on site with compliance to OSHA regulations (no manual dips required).

Primary Application Areas

Water & Wastewater:

- Primary Sedimentation – Blanket level
- Secondary and Final Clarifiers – RAS Blanket layer
- Sequential Batch Reactors – Blanket monitoring (floating sonar)
- Lagoons – Sludge Bed Level
- Lamella Clarifier – Sludge Bed Level
- Filtration
- Gravity Filtration
- Gravity Settling.

Features

- User friendly configuration to track specific densities
- Tune Sensor to 5 preset factory densities or fine tune to the required density in-situ
- Sonar transducer developed to optimize detection of heavy and light density interfaces
- Easy calibration to track specific density interfaces, eg: RAS blanket - 4g/l, floc / fluff layer - 1g/l, Bed 10g/l+
- Industrial scum cleaning mechanisms that do not require maintenance
- No wiper blade assemblies
- Wide range of communications: Modbus, HART, Foundation Fieldbus, DeviceNet, Profibus DP and Profibus PA
- 3G remote support capability for calibration, commissioning or technical back-up from HAWK Service Engineer
- 5 Relay alarms
- 1640 feet (500 metre) separation possible between transducer and Sultan Sonar transmitter.

Typical Applications

Sultan Sonar System

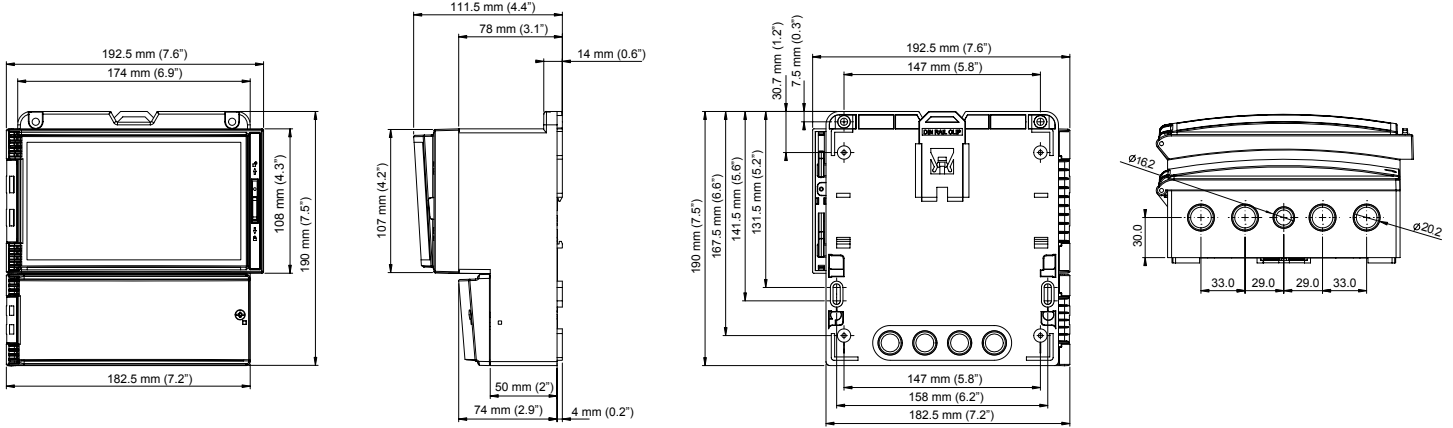


Area	Functions
Water Treatment Plant	
Primary Sedimentation Tank	Floc level / sludge blanket level
Sludge Thickener Tank	Sludge bed level / suspended solids / floc level
Calcium Hydroxide Reactor	Sand / pellet bed level
Sodium Hydroxide Reactor	Sand / pellet bed level
Sewage Treatment Plant	
Primary Sedimentation Tank	Sludge blanket level
Secondary / Final Clarifier	RAS blanket level / rag/pinfloc layer / suspended solids
Sludge Thickener Tank	Sludge bed level / suspended solids
“DAF” Tank	Sludge bed level / floating sludge level
Sequential Batch Reactor (SBR)	Settling bed level / RAS blanket level
Industrial (food, paper etc.)	
Primary Sedimentation Tank	Sludge blanket level
Secondary Clarifier Tank	RAS blanket level / suspended solids / rag/pinfloc layer
Thickener Tank	Sludge bed level / clarity suspended solids / floc level
Sequential Batch Reactor (SBR)	Settling blanket level / RAS bed level
Carbon Column	Carbon bed level

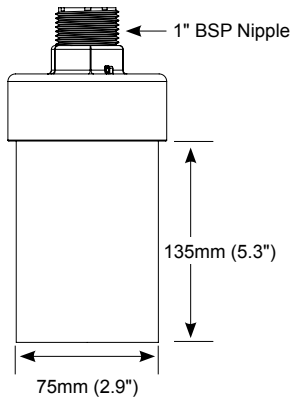




AWR234 Remote Amplifier



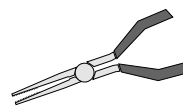
Remote Transducer



AWR234 Wiring

RELAY 1			RELAY 2			RELAY 3			RELAY 4			RELAY 5		
NC	COM	NO	NC	COM	NO	NC	COM	NO	NC	COM	NO	NC	COM	NO
<input type="checkbox"/>	<input type="checkbox"/>	<input type="checkbox"/>	<input type="checkbox"/>	<input type="checkbox"/>	<input type="checkbox"/>	<input type="checkbox"/>	<input type="checkbox"/>	<input type="checkbox"/>	<input type="checkbox"/>	<input type="checkbox"/>	<input type="checkbox"/>	<input type="checkbox"/>	<input type="checkbox"/>	<input type="checkbox"/>
16	17	18	19	20	21	22	23	24	25	26	27	28	29	30
<input type="checkbox"/>	<input type="checkbox"/>	<input type="checkbox"/>	<input type="checkbox"/>	<input type="checkbox"/>	<input type="checkbox"/>	<input type="checkbox"/>	<input type="checkbox"/>	<input type="checkbox"/>	<input type="checkbox"/>	<input type="checkbox"/>	<input type="checkbox"/>	<input type="checkbox"/>	<input type="checkbox"/>	<input type="checkbox"/>
1	2	3	4	5	6	7	8	9	10	11	12	13	14	15
I_s	+	-	RED	BLACK	BLUE	WHITE	Test In	B	A	-	+	⊕	N	L1
4-20mA			TRANSDUCER					COMMS		DC-In		AC-In*		

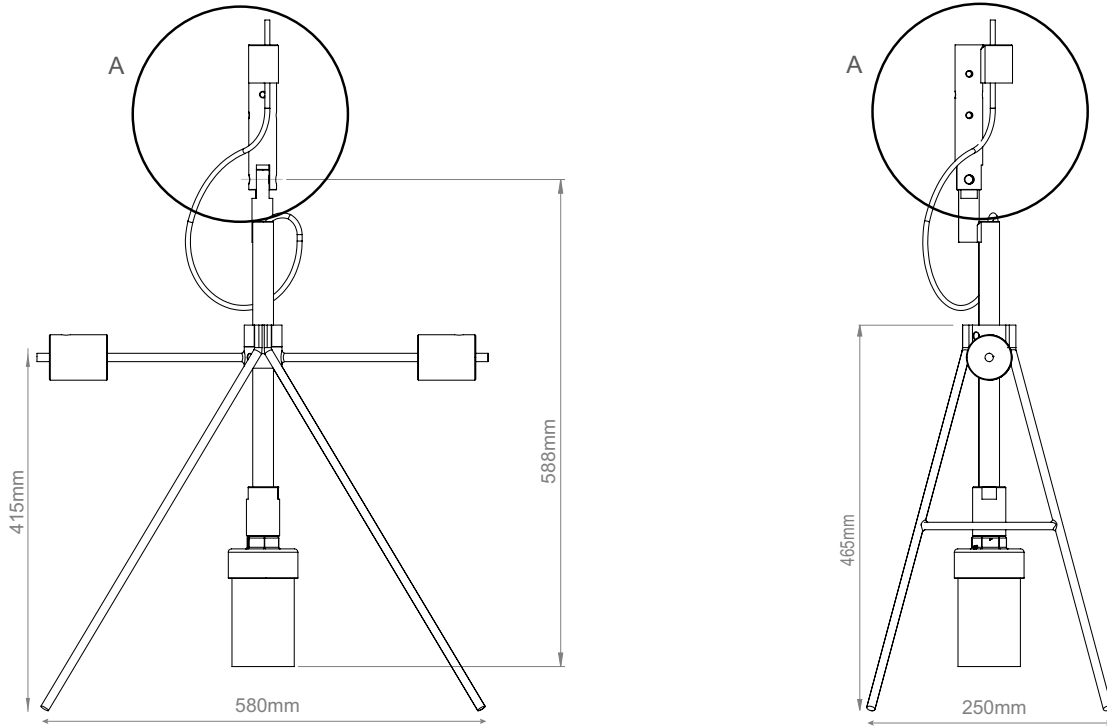
*48VDC Sultan version will have these terminals marked as the 30-48VDC input



Use long nose pliers to extract terminals

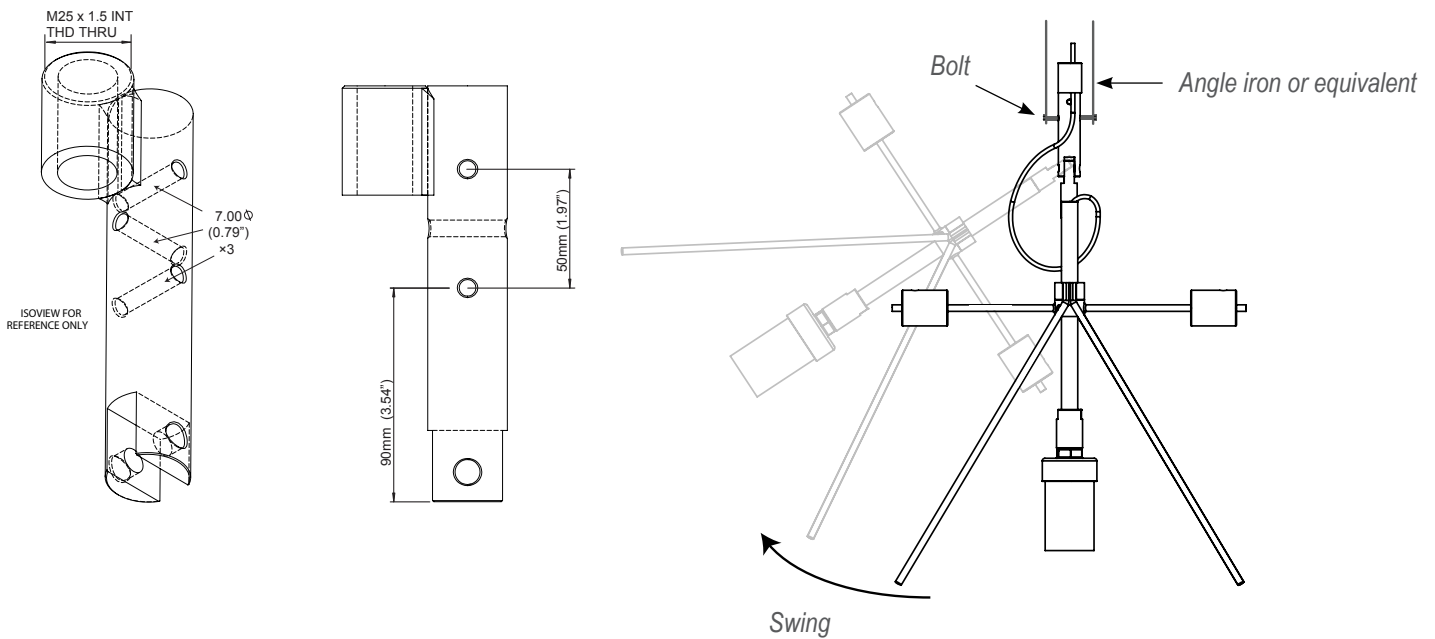


Impact Plate



Mounting Connection (A)

The top of the Impact Plate has 3 x 7mm bolt holes which can be secured to an angle iron or equivalent bracket. The Impact Plate is designed to swing parallel with the counter weights. The surface sweeper must come in contact with the legs of the Impact Plate which swings the bracket lifting the transducer out of the liquid. When the sweeper has cleared, it will drop back in and use the counter weights to re-center.





Remote Amplifier

Model

AWR234 Remote 3 / 4 Wire, 5 relays, Modbus

Housing

S Polycarbonate

Power Supply

B 12-30VDC

C 30-48VDC and 48-90VAC

U 12-30VDC and 90-260VAC

Additional Communications (PC comms GosHawk standard)

S Switch only. 5 relays

X 4-20mA analogue

I 4-20mA analogue with HART Isolated 4 wire

A Profibus PA

P Profibus DP

F Foundation Fieldbus

D DeviceNet

Accessory

X Not Required

Approval Standard

X Not Required

A22 ATEX Grp II Cat 3 GD T85°C IP67 Tamb -40°C to 70°C

GP CSA Equip Class 2; Pollution deg 2; Tamb -20°C to 75°C (Ordinary Locations)

Additional Software

X Not Required

AWR234 S U X X X X



Remote Sonar Transducer

AWRTS Sultan Sonar Transducer

Transducer

002	151kHz
003	300kHz
004	450kHz
005	700kHz

Facing & Housing material

S4 Fiberglass face with Polypropylene housing (max 50°C / 122°F)

Approval Standard

X	Not Required
RN	CSA Class I; Div 1/2; Group D; Zone 0; AEx/Ex ia IIA; T4
GP	CSA Equip Class 2; Pollution deg 2; Tamb -20°C to 75°C (Ordinary Locations)
i0	IECEX Zone 0 (Ex ia IIA T4 IP68 Tamb -20°C to 70°C)
A0	ATEX Grp II Cat 1 GD EEx ia IIA T4 IP68 (Tamb -20°C to 65°C)
A1	ATEX Grp II Cat 2 GD EEx m II IP68 T5 (Tamb -20°C to 65°C) T6 (Tamb -20°C to 50°C)
i1	IECEX Zone 1 (Ex mb II IP68 T5(Tamb -20°C to 65°C) T6 (Tamb -20°C to 50°C))
A22	ATEX Grp II Cat 3 GD T85°C IP67 Tamb -40°C to 70°C

Connection

C	IP68 Sealed cable
6	6m
15	15m

AWRTS 002 S4 X C 6

Scum Cleaner

IMPACT-PLATE: Single direction auto scum cleaner (requires contact with surface sweeper)

IMPACT-PLATE-2: Dual direction auto scum cleaner (requires contact with surface sweeper)

Accessories

HAWKLink Data Modem

HLR Remote stand alone HAWKLink system

Power Supply

B	12-30VDC
U	12-30VDC and 90-260VAC

Network Type

G3 3G Autoband

Sim Card

S3	3 month Australian Sim Card
S12	12 month Australian Sim Card
X	Not Required

HAWKLink USB PC connector for GosHawkII

HAWKLink-USB

Stainless Steel Sunhood

SUNHOOD

Extra Cable (Belden 3084A)

CA-TXCC-R-C15	15m cable
CA-TXCC-R-C30	30m cable
CA-TXCC-R-C50	50m cable
CA-TXCC-R-C100	100m cable

HLR U G3 S3

Consult local representation for international sim card support.

Specifications

Sultan Sonar System



Sonar Frequency Selection

- 151kHz
- 300kHz
- 450kHz
- 700kHz

Operating Voltage

- 12 - 30VDC (residual ripple no greater than 100mV)
- 90 - 265VAC 50 / 60Hz
- 48Vdc, 48VAC-90VAC 50 / 60Hz.

Power Consumption

- <3W @ 24VDC
- <10VA @ 240VAC
- <4W @ 48VAC, <7VA @ 48VAC - 90VAC.

Analogue Output

- 4 – 20mA (750 Ohm@ 24VDC User Voltage supply) or Internal driven 250 Ohm.

Communications

- GosHawk, Modbus, HART, Profibus DP, DeviceNet, Foundation Fieldbus, Profibus PA.

Relay Output

- 5 x Form 'C' (SPDT) contacts, rated 0.5A at 240VAC non-inductive
- All relays have independently adjustable dead bands

Maximum Range

- 15m (50 ft)

Blanking Distance

- 350mm

Resolution

- 1mm

Accuracy

- +/- 0.25%

Operating Temperature

- Remote Electronics -40°C (-40°F) to 80°C (176°F)
- Sonar Transducer: -40°C (-40°F) to 50°C (122°F)

Transducer Material

- Polypropylene Housing, Fibreglass Face

Impact Plate Material

- 316L Stainless Steel.

Transducer / Transmitter Separation

- >500m

Note: Must be BELDEN 3084A.

Display

- 2 line x 12 digit alphanumeric LCD.

Memory

- Non-Volatile (No backup battery required)
- >10 years data retention.

Enclosure Sealing

- Remote Electronics IP65 (Nema 4x)
- Remote Transducer IP68.

Cable Entries

- Remote: 3 x 20mm, 1 x 16mm knock outs.

Cable (Sonar Transducer)

- 4 conductor shielded twisted pair instrument cable
- Conductor size dependent on cable length
- BELDEN 3084A, DEKORON or equivalent
- Max: BELDEN 3084A = 500m (1640 ft)
- Max: DEKORON IED183AA002 = 350m (980 ft).

Typical Weight

- Remote Electronics 1kg
- Remote Transducer 1kg
- Impact Plate 5kg.

Hawk Measurement Systems (Head Office)

15 - 17 Maurice Court
Nunawading VIC 3131, AUSTRALIA
Phone: +61 3 9873 4750
Fax: +61 3 9873 4538
info@hawk.com.au

For more information and global representatives: www.hawkmeasure.com

Additional product warranty and application guarantees upon request.
Technical data subject to change without notice.

Hawk Measurement

96 Glenn Street
Lawrence, MA 01843, USA
Phone: +1 888 HAWKLEVEL (1-888-429-5538)
Phone: +1 978 304 3000
Fax: +1 978 304 1462
info@hawkmeasure.com

Represented by:

